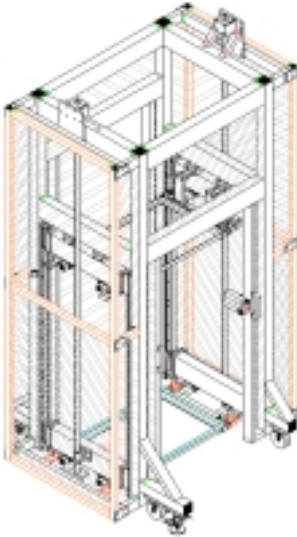
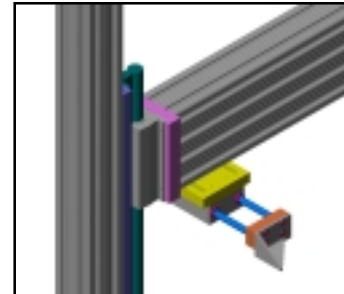


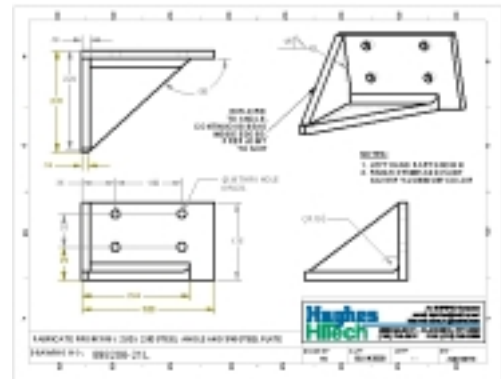
Problem: Workers at local bakery were tasked with stacking, by hand, trays of product from a conveyor onto floor level steel caster-carts. The loaded plastic trays weigh about 25~27 pounds each. The trays have to be stacked 15 units high, starting at floor level up to a stacked height of over 7 feet! The main problem to be solved was an ergonomic worker safety and health issue.



Objective: The need was to reduce the potential for injury from bending over with the loaded trays and from lifting the loaded trays overhead, and to maximize production by reducing operator fatigue.



Solution: Hughes' engineering team went to work to design and build a semi-automatic tray stacking machine that very effectively met the immediate objective and provided an upgrade/retrofit path to higher production through future full automation. Hughes' designers and engineers seamlessly blended several of our industry leading product lines (80/20 Inc., Lintech, and Whedco to name a few...) to produce a custom designed and built solution that does exactly what our customer needs and wants it to do!



This example is just one of the hundreds of component and systems solutions Hughes has provided throughout New York State, northwestern Pennsylvania and southern Ontario, Canada. Can we build one for you? Call us today at 716-759-8374!

